

AOS-W Instant 6.1.3.1-3.0.0.0 Quick Start Guide

This Quick Start Guide will assist you to quickly connect and configure Alcatel-Lucent Instant. To learn more about Alcatel-Lucent Instant and for detailed configuration information, see the *AOS-W Instant User Guide*.

Getting Started

1. **Get an IP address**—You will require an IP address to connect to a network. To get an IP address from a DHCP server in your network:
 - a. Connect the OAW-IAP to an intermediate gateway router or switch that has connectivity to the DHCP server.
 - b. Power on the OAW-IAP. The OAW-IAP receives an IP address provided by the switch or router. Power the OAW-IAP either by plugging to an Ethernet cable coming from a 802.3af Power over Ethernet (PoE) switch or device, or by connecting it to an AC adapter.



After the OAW-IAP starts up, it will try to do DHCP if static IP configuration is not available. If DHCP times out, a default IP within 169.254.x.y/16 subnet will be configured on the OAW-IAP.

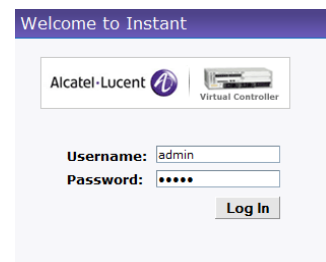
2. **Connect to the provisioning Wi-Fi network**—Connect a wireless enabled client to the provisioning Wi-Fi network. The provisioning network name is **instant**. The following [Table 1](#) shows how to find the **instant** wireless network using Windows 7 or Mac OS. Click the wireless network icon and select **instant** network.

Table 1 Connect to provisioning network in Microsoft Windows and Apple Mac OS)



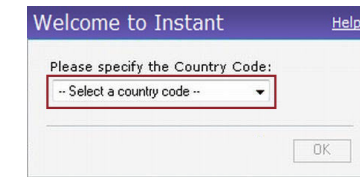
3. **Log in to the Alcatel-Lucent Instant WebUI**—Open a web browser and enter instant.alcatel-lucent.com in the address bar to access the Alcatel-Lucent Instant login screen. If you enter any other URL, you are redirected to the Alcatel-Lucent Instant login screen. In the login screen, as shown in [Figure 1](#), enter the following credentials:
 - Username - **admin**
 - Password - **admin**

Figure 1 WebUI Login Screen



4. **Select the Country Code**—A **Country Code** box, as shown in [Figure 2](#), is displayed after you successfully log in to the WebUI. Select your country code from the drop-down menu.

Figure 2 Country Code box



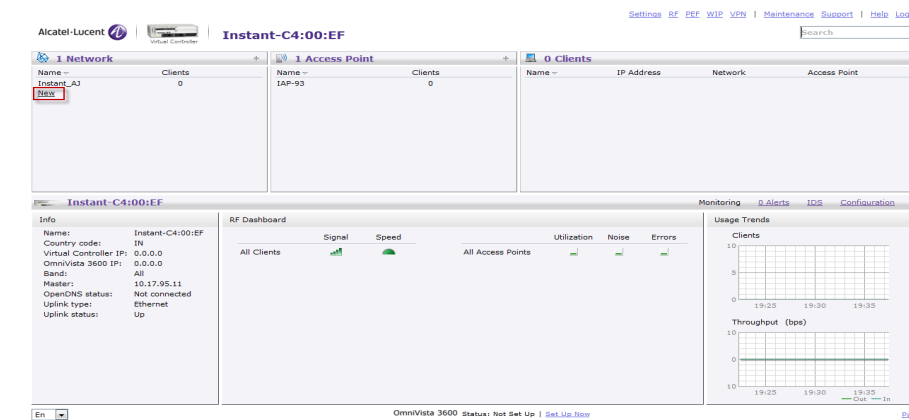
The Country Code will not appear, and cannot be set for OAW-IAPs designated for US, Japan, and Israel.

Creating a Network

The Instant Access Point user interface is a standard web-based interface that allows you to configure and monitor an OAW-IAP network.

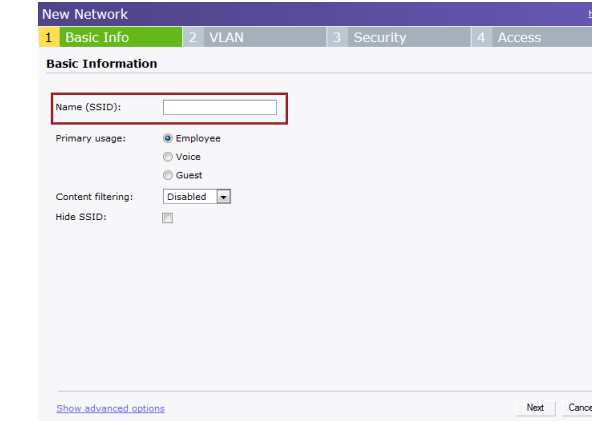
5. In the **Network** window, click the **New** link, as shown in [Figure 4](#).

Figure 3 Instant User Interface



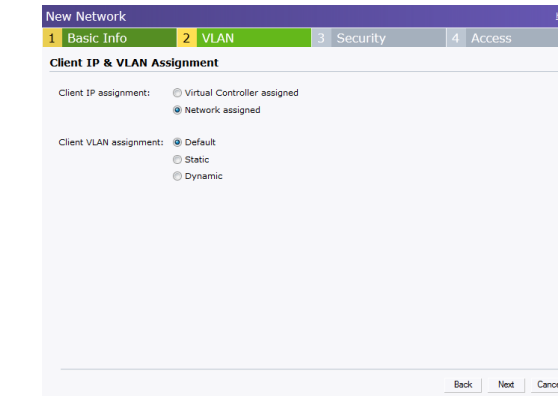
6. The **New Network** window appears as shown in [Figure 4](#).

Figure 4 New Network window



7. In the **Basic Info** tab, shown in [Figure 4](#), enter a name for the network in the **Name (SSID)** text box. Click **Next** to continue.
8. In the **VLAN** tab, shown in [Figure 5](#), select the required Client IP assignment and Client VLAN assignment options. Click **Next** to continue.

Figure 5 VLAN tab

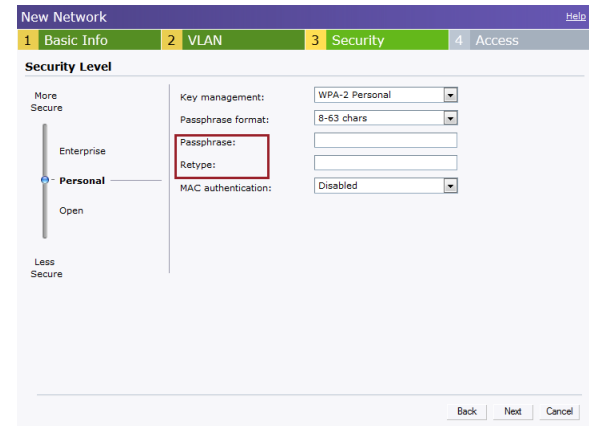


9. In the **Security** tab, shown in [Figure 6](#), enter a passphrase in the **Passphrase** and **Retype** fields. Click **Next** to continue.



Alcatel-Lucent recommends that you note the passphrase for future use.

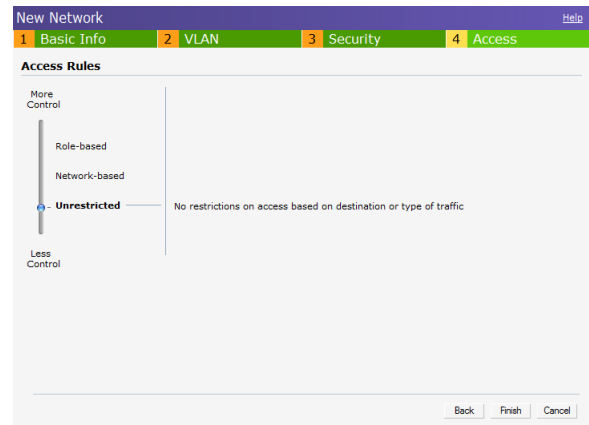
Figure 6 Security tab



For additional security level options, refer to the *AOS-W Instant User Guide*.

10. In the **Access** tab, the default is the **Unrestricted** option. For information about the **Network-based** and **Role-based** access rule settings, refer to the *AOS-W Instant User Guide*.

Figure 7 Access tab



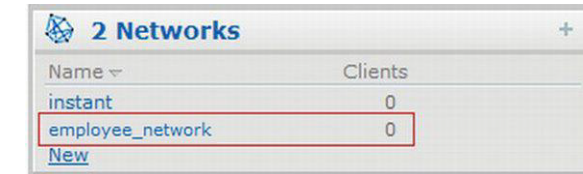
11. Click **Finish** to close the window. The new network that you created is now added to the **Networks** window.

Verifying WebUI and LEDs

After setting up Alcatel-Lucent Instant and adding a network, you can use the WebUI and the LEDs to verify the operating status of Alcatel-Lucent Instant.

- **Using the WebUI**—Verify the newly created network is displayed in the **Networks** window, as shown in Figure 8.

Figure 8 Networks window



12. Disconnect client from the instant provisioning network.

13. Connect client to the network you created, as described in [step 2](#).

14. Login to the Instant Access Point WebUI, as in [step 3](#).

The instant provisioning network is automatically deleted and should no longer be present.



Alcatel-Lucent recommends that you change the administrator login password. Refer to the **AOS-W Instant User Guide** in the section titled Management Authentication Settings.

- **Using LEDs**—Use the LEDs to verify the operating status of the OAW-IAP. The LED functionality is described in the Install Guide included with your Alcatel-Lucent Instant Access Point.



For **Uplink Connection**: Use the E0 port on OAW-IAP134/135 and OAW-RAP3WN/3WNP for uplink connections to a switch or router.
For **Downlink Connection**: Use the E1 port on OAW-IAP134/135 for wired downlink connectivity. The E1 and E2 ports on OAW-RAP3WN/3WNP support wired downlink connectivity.



The E2 port on OAW-RAP3WNP has PoE power sourcing capability (PSE) to supply power to any compliant 802.3af powered device

Contacting Alcatel-Lucent

Web Site Support	
Main Site	http://www.alcatel-lucent.com/enterprise
Support Site	https://service.esd.alcatel-lucent.com/

Telephone Support	
North America	1-800-995-2696
Latin America	1-877-919-9526
Europe	+33 (0) 38 855 6929
Asia Pacific	+65 6240 8484
Worldwide	1-818-878-4507

Copyright

© 2012 Alcatel-Lucent, Inc. All rights reserved.
Specifications in this manual are subject to change without notice.
Originated in the USA.
Any other trademarks appearing in this manual are the property of their respective companies.

Legal Notice

This hardware product is protected by the Alcatel-Lucent Limited Lifetime warranty.

AOS-W Instant 6.1.3.1-3.0.0.0

Quick Start Guide



AOS-W Instant
6.13.1-3.0.0.0
Quick Start Guide
Part Number 0511123 - 01 | June 2012